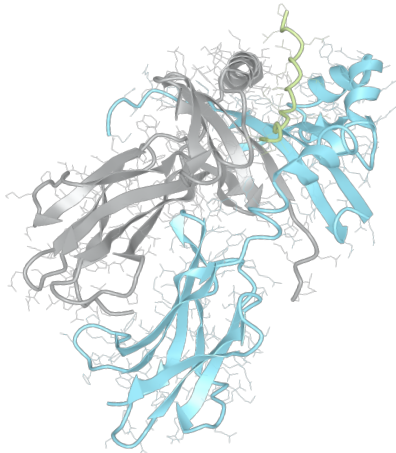


Product datasheet



sHLA- DRB1*16:01 DRA*01:01

DRB1*1601, DRB11601, DRB1*16, DRB16, DR16
DRA*0101, DRA0101, DRA*01, DRA01

Serological Name	DR16
Peptide Load	Endogenous
Modification	Unmodified
Conjugation	Unconjugated
SKU	DRB11601

Product Description

Allele Name	<p>DRA*01:01</p> <p>DRB1*16:01</p>
HLA Class	HLA Class II
HLA Gene Locus	HLA-DR
Alternative Allele Name A Chain	DRA*0101, DRA0101, DRA*01, DRA01
Alternative Allele Name B Chain	DRB1*1601, DRB11601, DRB1*16, DRB16, DR16
Description	Recombinant, truncated Class II soluble Human Leukocyte Antigen (sHLA), naturally folded and glycosylated, loaded with endogenous peptides.
Serological Name	DR16
Serological Split	DR2
Allele Frequency [World Population]	
A chain	-
B chain	2.00%

Associated products

[DRB11601bio](#)
[DRB11601pe](#)

Product Specification

Product name	HLA-DRB1*16:01
HLA Species	Human
Host Cell Line Species	Mouse
Clone Designation	
Tail Specification	ZP
Peptide Load	Endogenous
Modification	Unmodified
Conjugation	Unconjugated
Complexity	Monomer
Protein Format	Recombinant, truncated, zipper-stabilized, soluble, non-modified, non-labeled, endogenously loaded
Storage Temperature	4°C (This product should be stored undiluted)
Form	Liquid
Concentration	1000.0 µg/ml
Formulation	PBS/0.02% Sodium Azide
pH	7.4
Purification Method	Affinity Chromatography
Grade	Research Use Only [RUO]
Authentication Verification	Sequence Based Typing

Protein Sequences

Alpha Chain Sequence	<p> IKEEHVIIQA EFYLNPDQSG EFMDFDGDGE IFHVDMASSE TVWRLEEFGR FASFEAQGAL ANIAVDKANL EIMTKRSNYT PITNVPPEVT VLTNSPVELR EPNVLCIFID KFTPPVVNVV WLRNGKPVTT GVSETVFLPR EDHLFRKFHY LPFLPSTEDV YDCRVEHWGL DEPLLKHWEF DAPSPLPETT EVDGGGGGAQ LEKELQALEK ENAQLEWELQ ALEKELAQ </p>
Beta Chain Sequence	<p> GDTRPRFLWQ PKRECHFFNG TERVRFLDRY FYNQEEVRF DSDVGEYRAV TELGRPDAEY WNSQKDFLED RRAAVDTYCR HNYGVGESFT VQRRVQPKVT VYPSKTQPLQ HHNLLVCSVS GFYPGSIEVR WFLNGQEKA GMVSTGLIQN GDWTFQTLVM LETVPRSGEV YTCQVEHPSV TSPLTVEWRA RSESAQSKVD GGGGAQLKK KLQALKKKNA QLKWKLQALK KKLAAQ </p>

Related Products

[DRB11602](#)
[DRB11101](#)
[DRB10701](#)
[DRB11501](#)

Applications

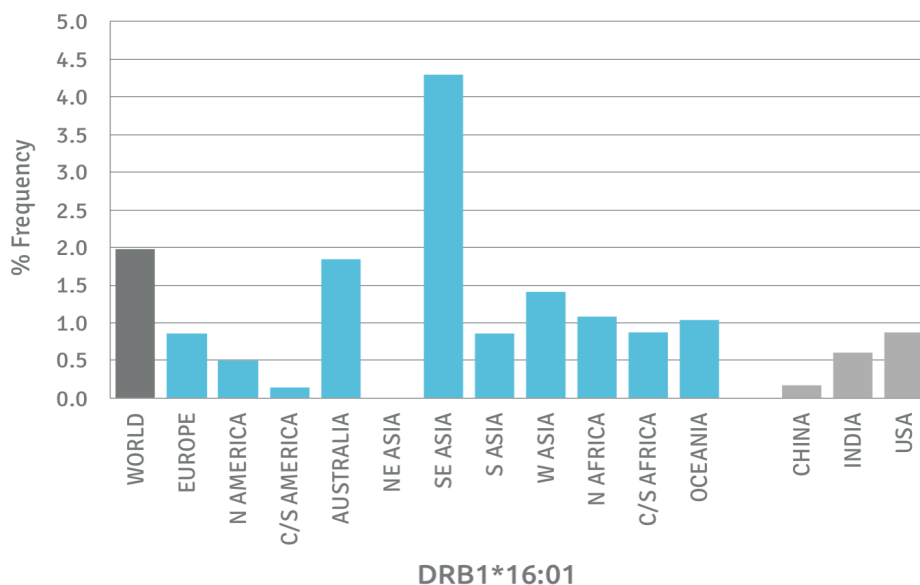
HLA Sandwich ELISAs
 HLA Direct ELISAs
 HLA-Sera Antibody Assays
 HLA Controls in ELISA Assays
 HLA Assay Standards
 HLA Blocking Assays
 HLA Neutralizing Assays
 HLA Competition Assays
 HLA Bead Assays
 HLA Immunization Procedures

Recommended Antibodies

L243

Allele Frequency

Worldwide Allele Frequency



Please note:

ALL PRODUCTS ARE FOR RESEARCH USE ONLY. NOT FOR COMMERCIAL USE IN DIAGNOSTIC PROCEDURES.
 For more information, please visit our Policies section on our website. For licensing inquiries, please contact

licensing@hlaprotein.com

HLA Protein
 PURE PROTEIN LLC

